

SIA T.I.G.E.R
Rīgas iela 54/1
Salaspils, LV-2169
Latvija

tiger@tiger.lv
www.tiger.lv

Tel +371 67185410
Fax +371 67941295



T.I.G.E.R

APZĪMĒJUMI • СИМВОЛЫ • KEY TO SYMBOLS



Svars • Вес • Weight



Tilpums • Объем • Volume



Satveršanas laukums • Площадь обхвата • Gripping area



Iekrāvēja celtspēja • Грузоподъемность крана • Lifting capacity



Max darba spiediens • Max рабочее давление • Max working pressure



Satveršanas spēks • Сила обхвата • Gripping force



Eļļas plūsma • Поток масла • Flow rate



Svars ar rotatoru • Вес с ротором • Weight including rotator



Rotators • Ротор • Rotator



Zobi • Зубья • Digging teeth



Cilindrs • Цилиндр • Cylinders



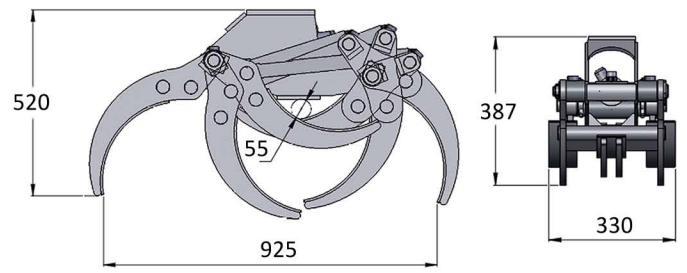
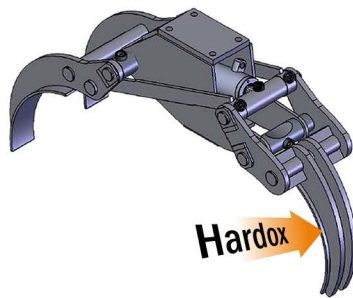
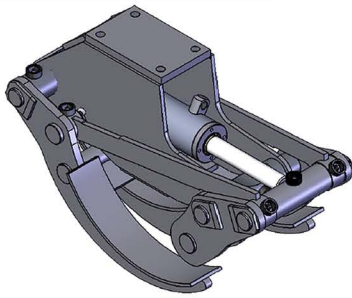
Ekskavatora svars – kustīgā montāža • Вес экскаватора – подвижный монтаж •
Excavator weight – cardanic mounting



ekskavatora svars – ciešā montāža • вес экскаватора – жесткий монтаж •
Excavator weight – rigid mounting

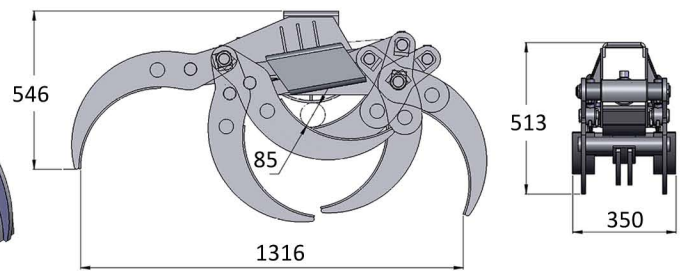
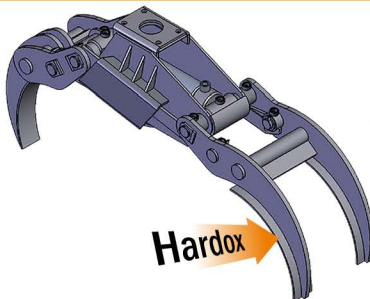
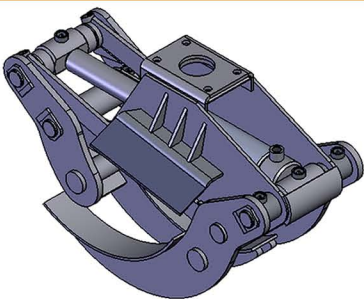
TG 16 ST

STONE AND RECYCLING GRABS • SATVĒRĒJI AKMEŅIEM, OTRREIZĒJĀM IZEJVIELĀM
• ЗАХВАТЫ ДЛЯ КАМНЕЙ И ВТОРИЧНОГО СЫРЬЯ



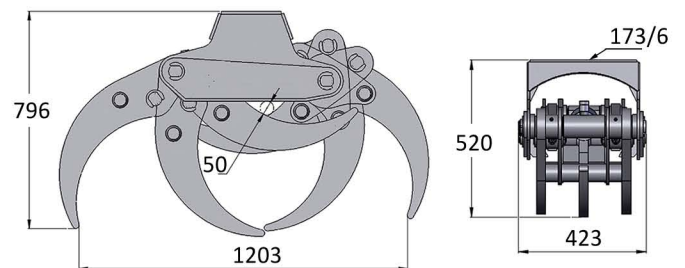
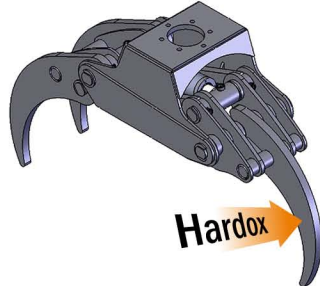
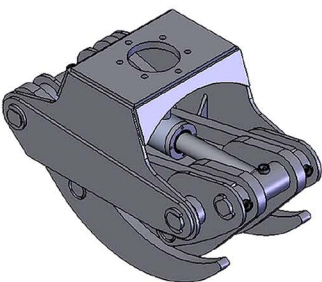
65	3	0,16	200	1	40	9	3	2

TG 22 ST



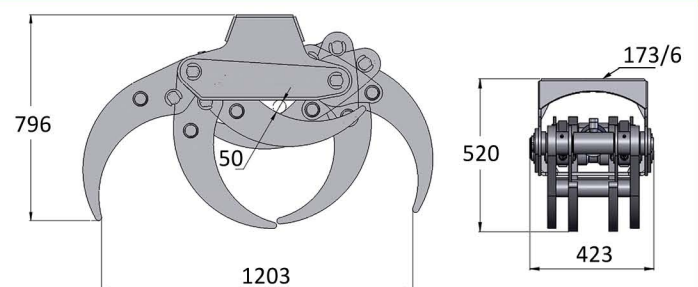
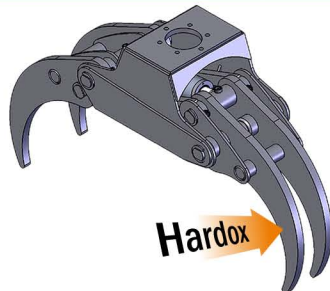
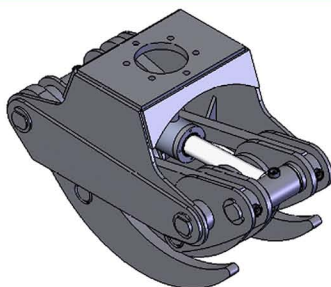
125	4	0,22	200	1	50	13,5	4	3

TG 25 SR3



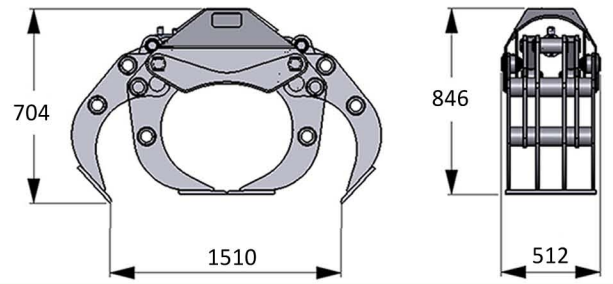
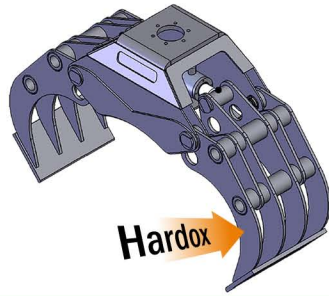
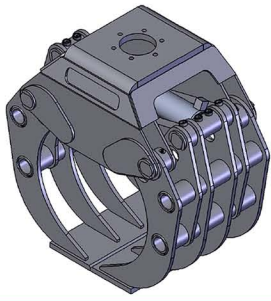
190	8	0,25	250	RX 55 F6	1	50	12,6	10

TG 25 SR4



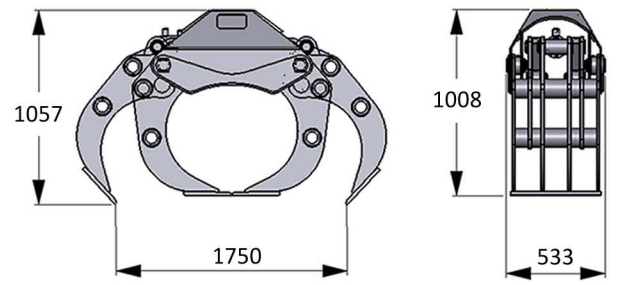
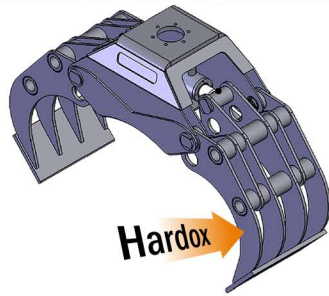
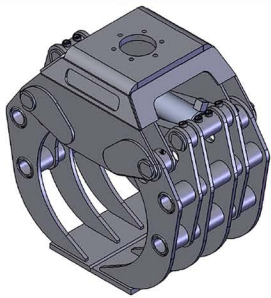
200	8	0,25	250	RX 55 F6	1	50	12,6	10

TG 28 ST



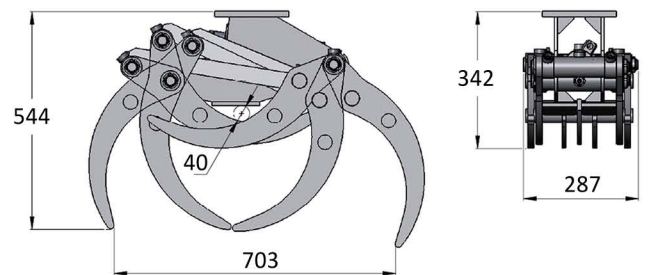
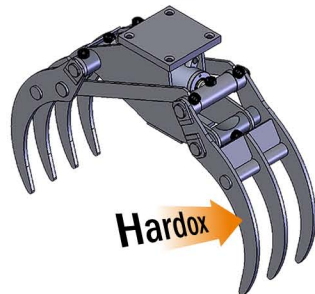
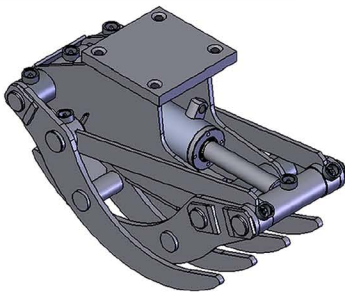
304	15	0,26	300	1	60	16,2	15	10

TG 42 ST



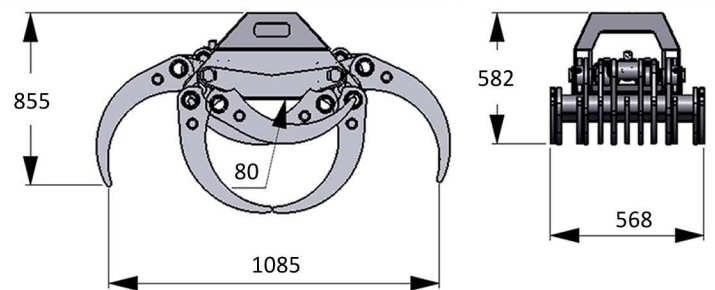
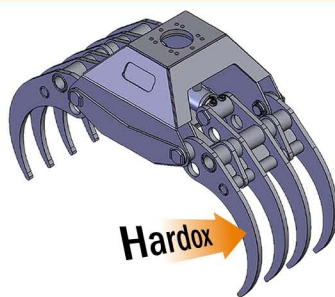
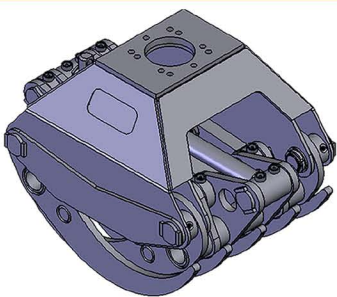
440	20	0,40	300	1	90	25	20	14

TG 12 UG/7



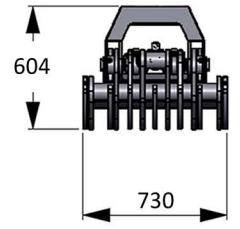
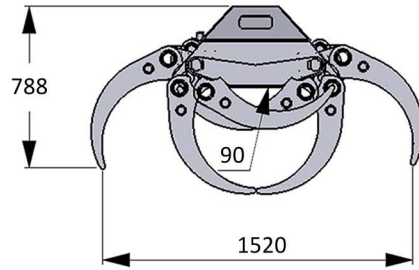
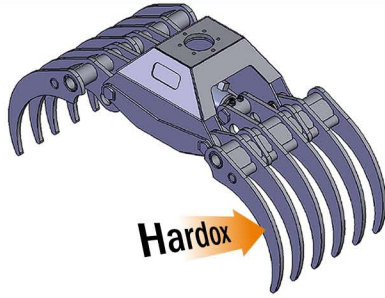
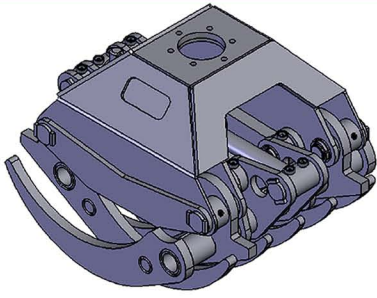
56	1,5	0,12	200	IVR 3 IVR 3 FS	1	30	8	-

TG 22 UG/9



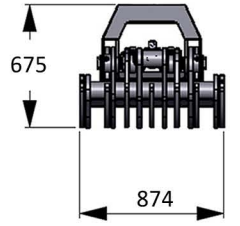
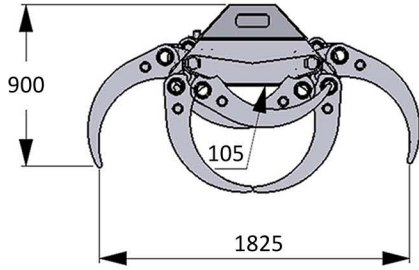
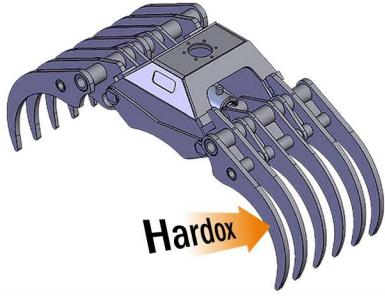
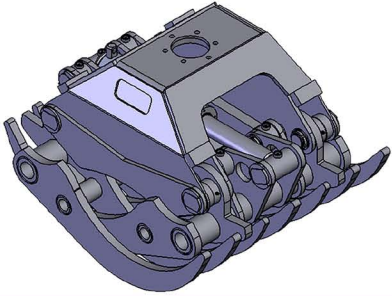
298	12	0,22	250	1	60	17	10	7

TG 28 UG/11



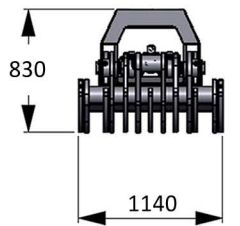
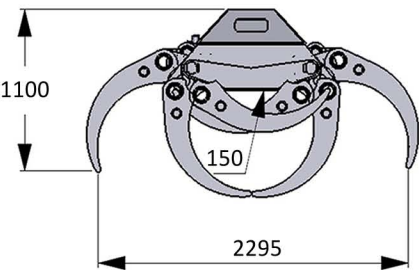
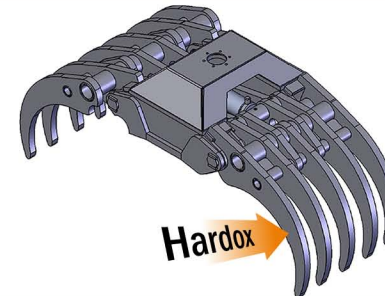
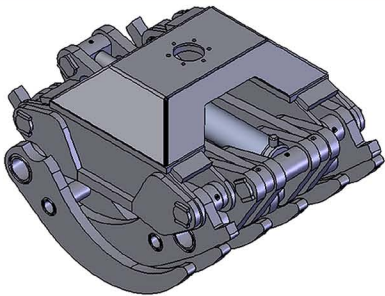
Kg	tm	m ²	Bar	№	l/min	kN	ton	ton
440	15	0,28	300	1	60	16,6	15	10

TG 36 UG/13



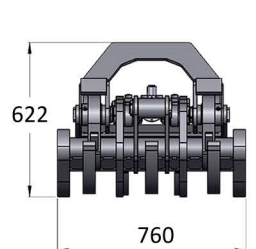
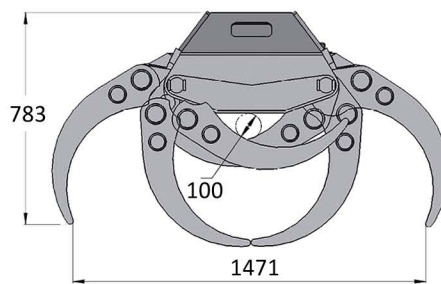
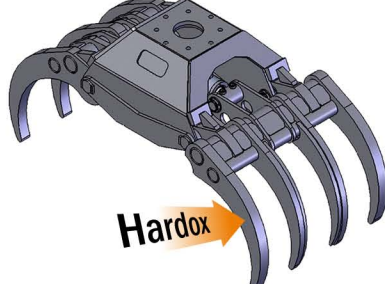
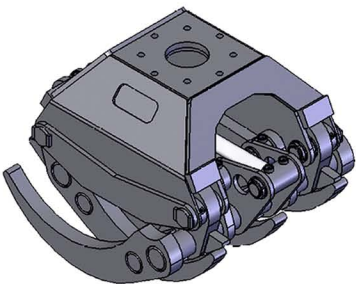
Kg	tm	m ²	Bar	№	l/min	kN	ton	ton
680	20	0,36	300	1	90	17,5	20	14

TG 55 UG/11



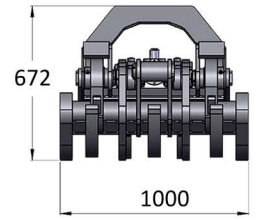
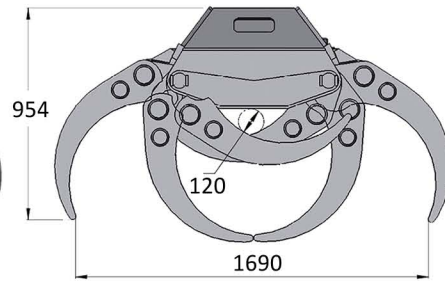
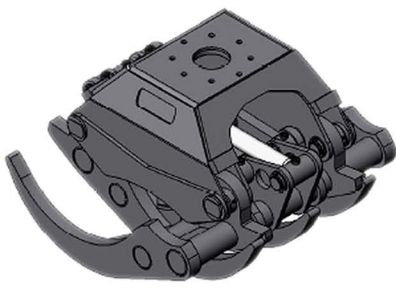
Kg	tm	m ²	Bar	№	l/min	kN	ton	ton
1700	30	0,60	300	1	90	37,5	30	20

GX 28-50



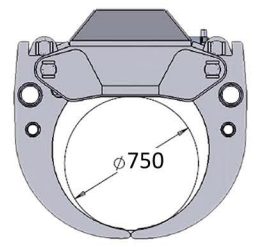
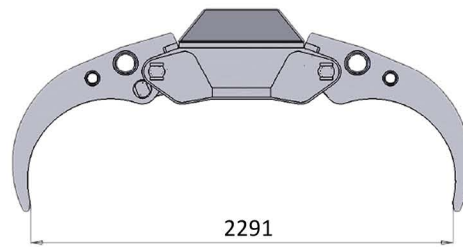
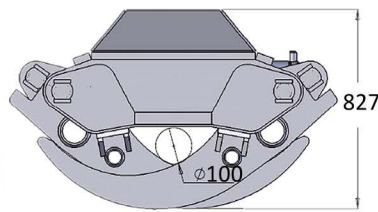
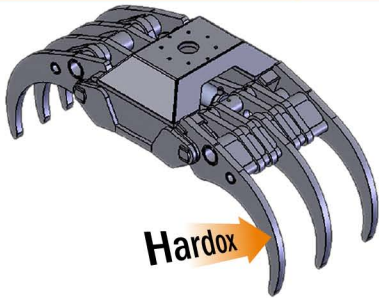
Kg	tm	m ²	Bar	№	l/min	kN	ton	ton
495	30	0,28	350	1	60	20	20	14

GX 36-50



680	30	0,36	350	1	60	20,5	20	18

GX 55-50



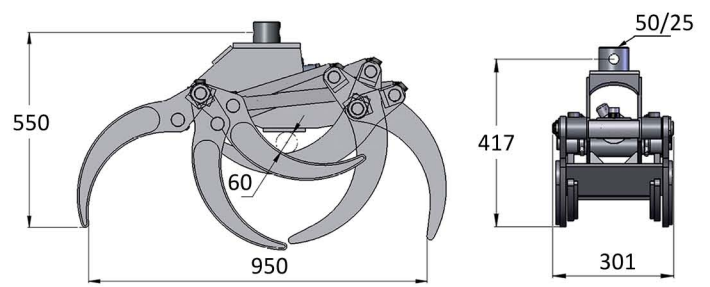
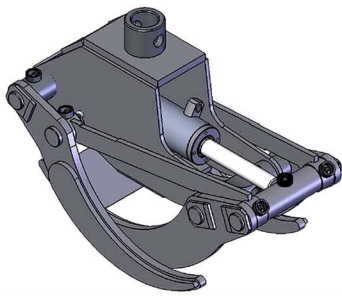
1585	-	0,6	350	1	90	37,5	40	30



TIGER grip

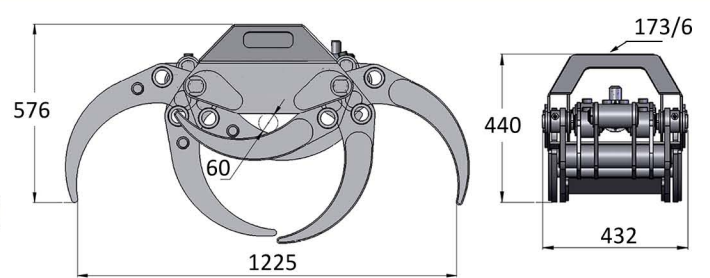
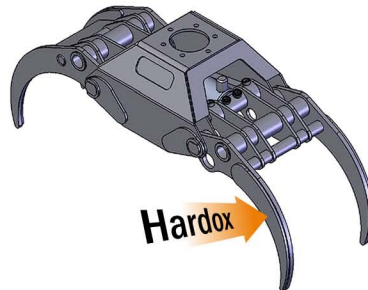
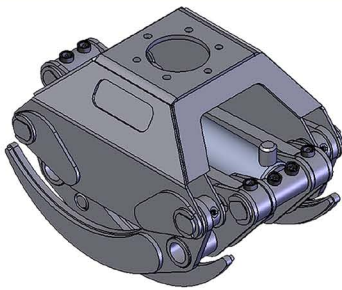
TG 16 SR4

FOREST RESIDUE GRAPPLES • SATVĒRĒJI MEŽIZSTRĀDES ATLIKUMIEM, ZARIEM •
ЗАХВАТЫ ДЛЯ ОТХОДОВ ЛЕСОРАЗРАБОТКИ И ВЕТОК



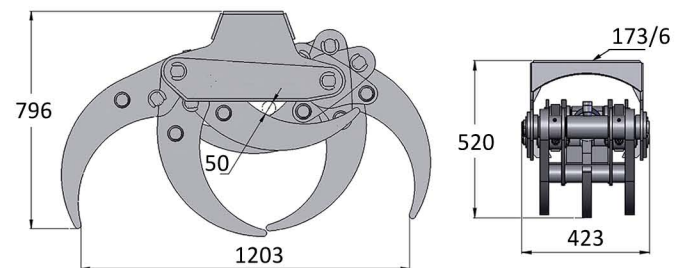
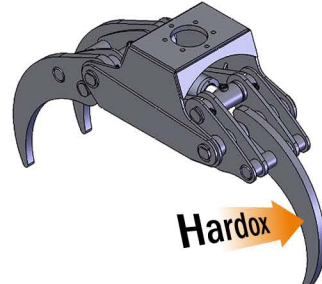
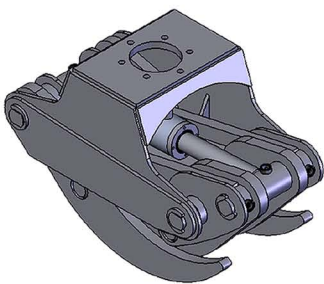
58	3	0,16	200	IVR 3	1	40	9	3

TG 22 PRO SR4



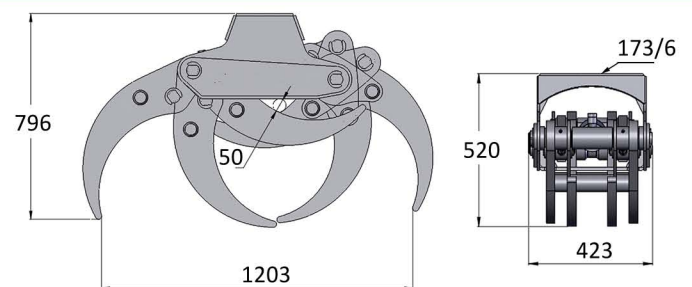
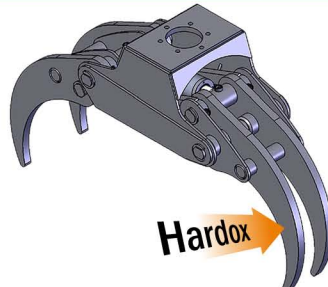
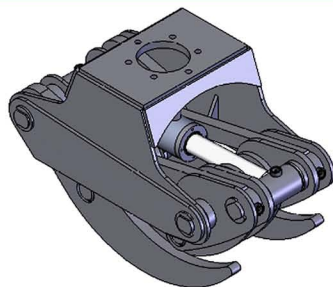
125	5	0,20	200	RX 55 F6	1	50	11,6	8

TG 25 SR3



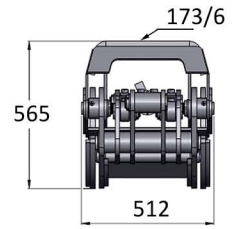
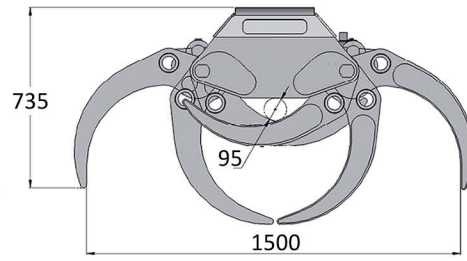
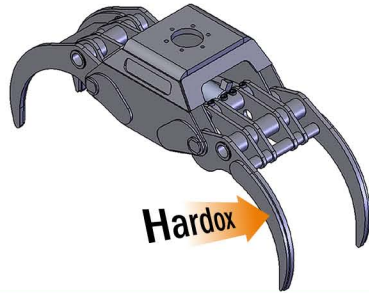
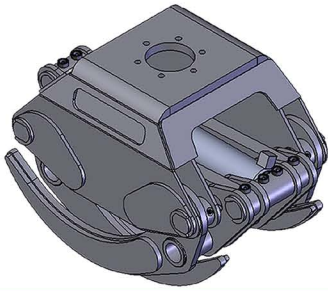
190	8	0,25	250	RX 55 F6	1	50	12,6	10

TG 25 SR4



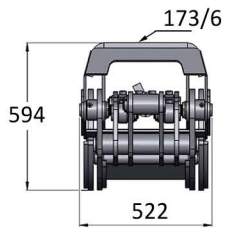
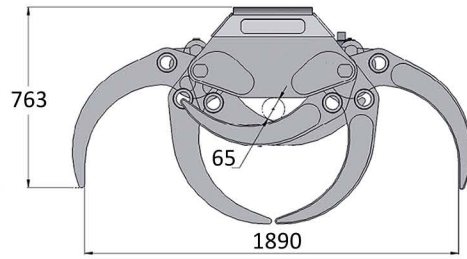
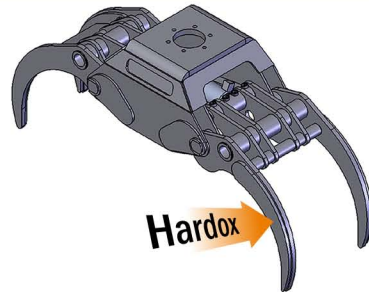
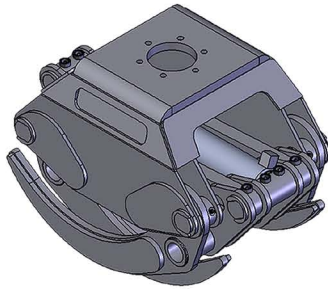
200	8	0,25	250	RX 55 F6	1	50	12,6	10

TG 28 SR4



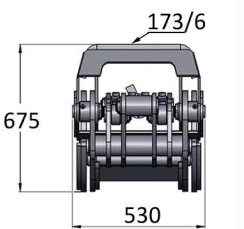
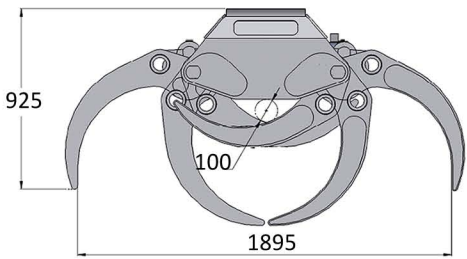
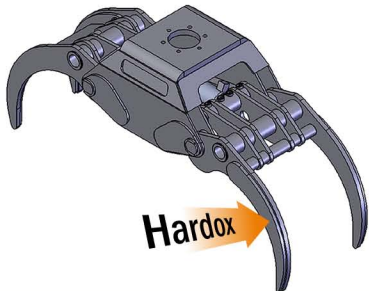
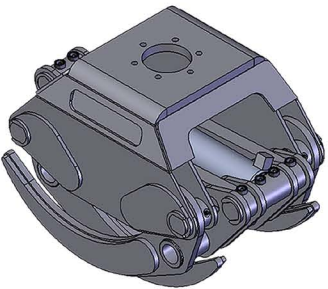
260	15	0,30	250	RX 120.2	1	60	16,6	15

TG 35 SR4



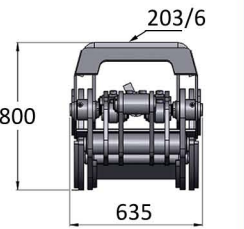
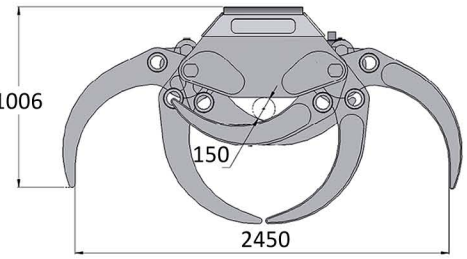
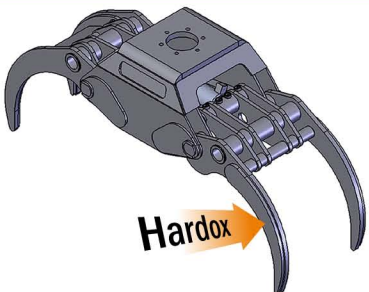
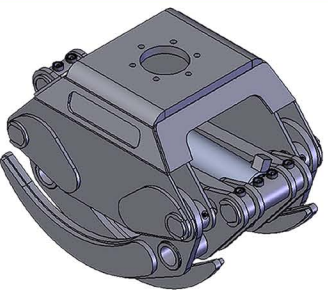
330	15	0,38	250	RX 120.2	1	60	17,6	15

TG 42 SR4



415	25	0,50	250	RX 120.2	1	70	21,8	20

TG 55 SR4



760	30	0,65	250	-	1	90	25	30